

# CANLYNIADAU ARHOLIADAU EXAMINATION RESULTS 2018



Ysgol Gyfun Gymunedol  
Penweddig

## LLWYDDIANNAU EIN DISGYBLION

Rydym yn falch iawn o lwyddiannau ein disgyblion ym mhob maes.

Maent yn ennill clodydd ar draws meysydd chwaraeon, cerddorol, diwylliannol, llenyddol, eisteddfodol a dyngarol.

Rydym yn falch iawn o lwyddiant academaidd ein disgyblion ar bob lefel o arholiad. Mae'r canlyniadau ardderchog hyn i gyd yn dystiolaeth o waith caled disgyblion ac athrawon a chefnogaeth gref y rhieni.

Fel y tystia arolwg 2017, mae canran y disgyblion sydd yn ennill **5 gradd A\* - A mewn TGAU** neu gymhwyster cyfwerth "**yn sylweddol uwch na chyfartaledd ysgolion tebyg yn 2016**". O ran Safon Uwch mae perfformiad yr ysgol yn "**gyson uchel ac yn debyg i gyfartaledd ysgolion tebyg eraill**".

Agwedd sy'n greiddiol i'r llwyddiannau hyn yw'r pwyslais mae'r ysgol yn ei roi ar ansawdd y gofal a'r consyrn real am les a datblygiad pob plentyn. Mae'r ysgol yn falch o'r rhinwedd hon ac yn ddyledus dros ben i'r cydweithrediad a'r gefnogaeth sydd rhwng yr ysgol a'r rhieni.

## PUPILS' SUCCESS

We are proud of our pupils' successes in all fields.

They gain praise in sports, music, cultural, literary, and humanitarian activities as well as eisteddfodau.

We are very proud of our pupils' academic success at all levels. These excellent results are testimony to the hard work of pupils and staff and to the strong support of parents.

As the 2017 inspection testifies, the percentage of pupils who gain **5 GCSEs at grade A\* - A** or an equivalent qualification is "**significantly higher than the average of similar schools in 2016**". As for A levels the school's performance is "**consistently high and similar to the average for other similar schools**".

A factor that is central to this success is the emphasis that the school places on the quality of the care and support provided and the real concern that we have for each pupil's development and progress. The school is proud of this strength and is greatly indebted to the excellent rapport that exists between us and parents.

This report uses data for 2017 for LA and Wales comparative information

YSGOL GYFUN PENWEDDIG  
Ceredigion

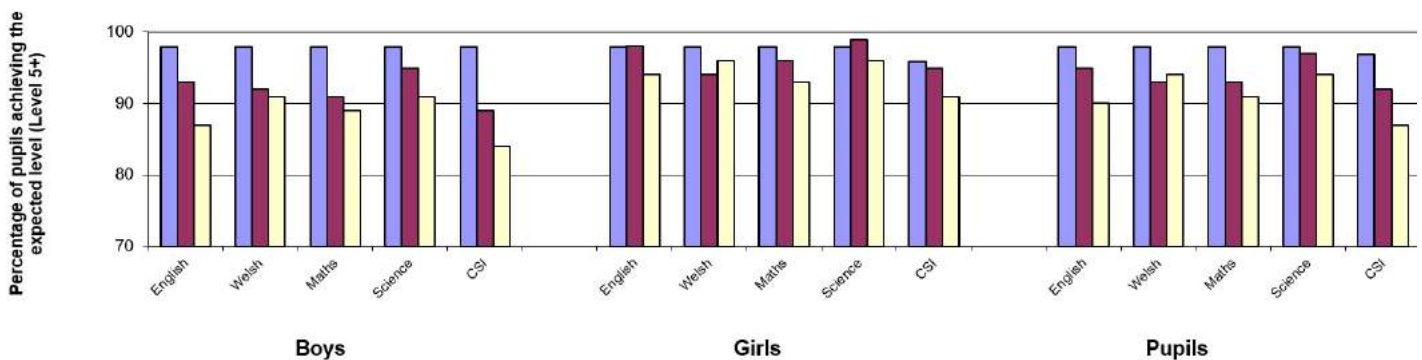
LA/School no: 667/4048

## School comparative information: National Curriculum Assessments 2018 Key Stage 3

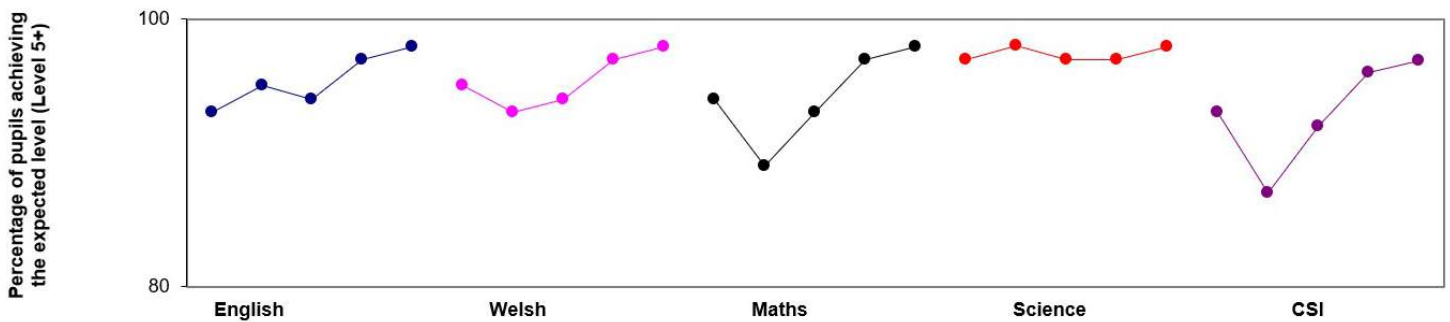
Percentage of boys, girls, and pupils achieving at least the expected level (Level 5+):

	Boys			Girls			Pupils		
	School 2018	LA 2017	Wales 2017	School 2018	LA 2017	Wales 2017	School 2018	LA 2017	Wales 2017
English	98	93	87	98	98	94	98	95	90
Welsh	98	92	91	98	94	96	98	93	94
Maths	98	91	89	98	96	93	98	93	91
Science	98	95	91	98	99	96	98	97	94
CSI	98	89	84	96	95	91	97	92	87

■ School 2018 ■ LA 2017 □ Wales 2017



### School Performance over time (2014 - 2018)



#### Notes:

1. Figures for Welsh refer to attainment in Welsh first language only.
2. CSI = Core Subject Indicator. To achieve the CSI a pupil must achieve at least the expected level 5 in both Mathematics and Science and either English or Welsh first language.
3. If there were no pupils eligible for assessment in a subject for a particular year the graph will discontinue and show a gap for that year.

Mae'r adroddiad hwn yn defnyddio data 2017 ar gyfer gwybodaeth gymharol yr ALI a Chymru

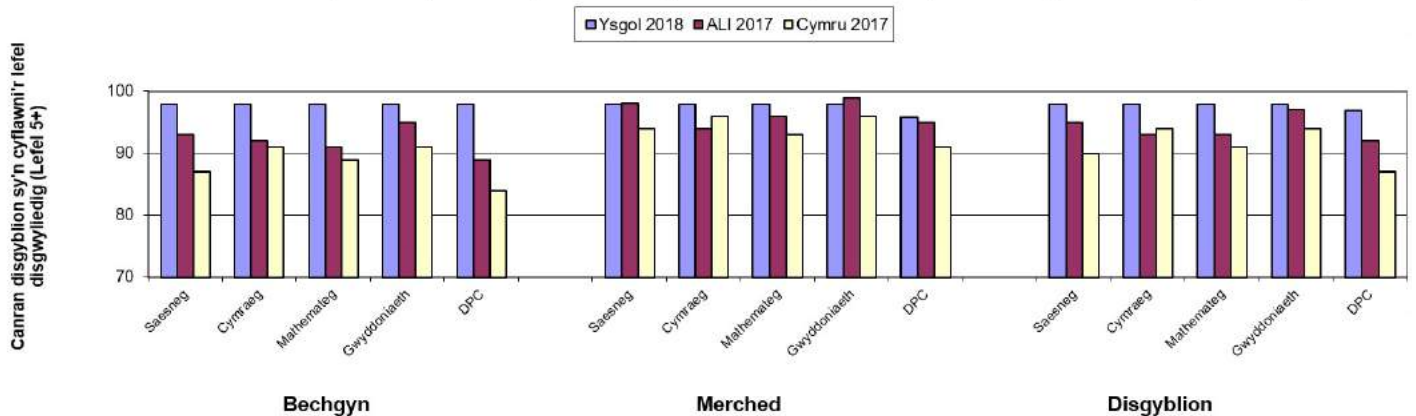
YSGOL GYFUN PENWEDDIG  
Ceredigion

Rhif yr ALI/Ysgol:667/4048

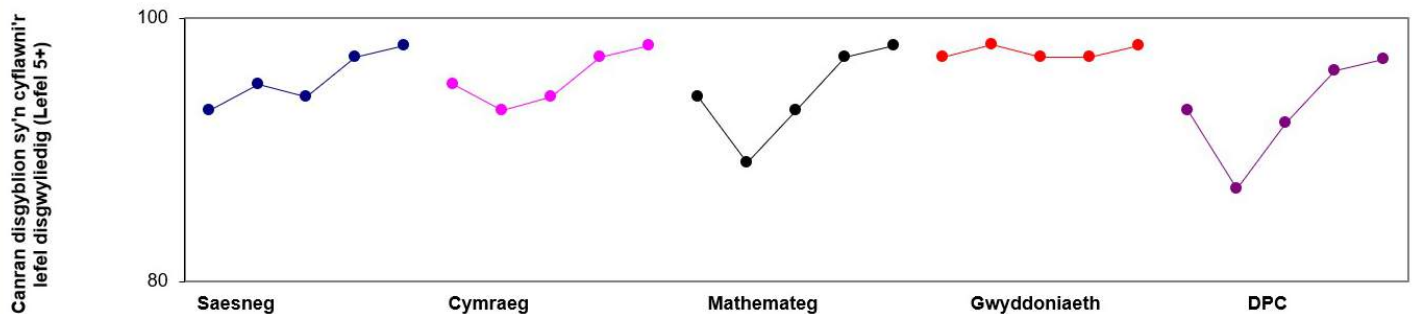
## Gwybodaeth gymharol yr ysgol: Aseidiadau'r Cwricwlwm Cenedlaethol 2018 Cyfnod Allweddol 3

Canran y bechgyn, merched a disgyblion sy'n cyflawni'r lefel disgwylidig o leiaf (Lefel 5+):

	Bechgyn			Merched			Disgyblion		
	Ysgol 2018	ALI 2017	Cymru 2017	Ysgol 2018	ALI 2017	Cymru 2017	Ysgol 2018	ALI 2017	Cymru 2017
Saesneg	98	93	87	98	98	94	98	95	90
Cymraeg	98	92	91	98	94	96	98	93	94
Mathemateg	98	91	89	98	96	93	98	93	91
Gwyddoniaeth	98	95	91	98	99	96	98	97	94
DPC	98	89	84	96	95	91	97	92	87



### Perfformiad yr ysgol dros amser (2014 - 2018)



#### Nodiadau:

- Mae'r ffigurau ar gyfer Cymraeg yn cyfeirio at gyrhaeddiad Cymraeg iaith gyntaf yn unig
- DPC = Dangosydd Pynciau Craidd. I sicrhau DPC, mae'n rhaid i ddisgybl gyflawni o leiaf lefel 5 disgwylidig mewn Mathemateg a Gwyddoniaeth a naill ai Cymraeg neu Saesneg iaith gyntaf
- Os nad oedd unrhyw ddisgyblion yn gymwys i'w hasesu mewn pwnc ar gyfer blwyddyn benodol bydd y graff yn terfynu a dangos bwllch ar gyfer y flwyddyn honno.

This report uses data for 2017 for LA and Wales comparative information

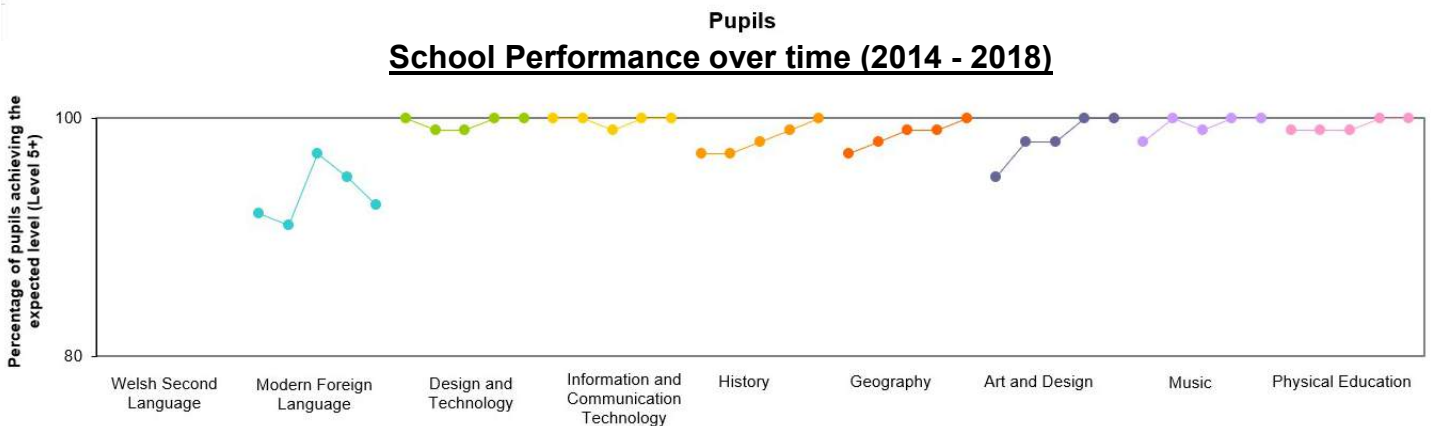
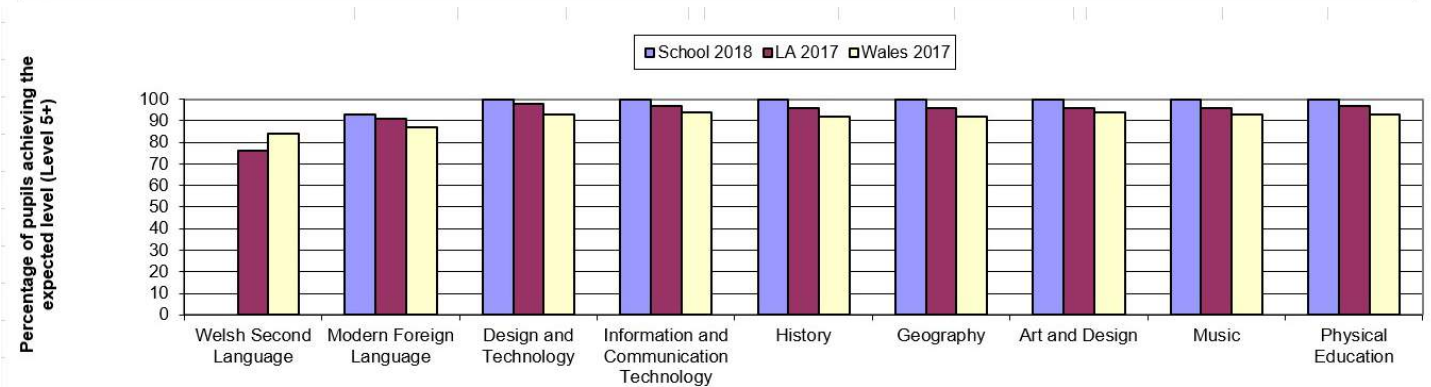
**YSGOL GYFUN PENWEDDIG**  
Ceredigion

LA/School no: 667/4048

## School comparative information: National Curriculum Assessments 2018 Key Stage 3

Percentage of pupils achieving the expected level (Level 5+)

	Boys			Girls			Pupils		
	School 2018	LA 2017	Wales 2017	School 2018	LA 2017	Wales 2017	School 2018	LA 2017	Wales 2017
Welsh Second Language	0	70	78	0	87	90	0	76	84
Modern Foreign Language	92	87	82	94	96	92	93	91	87
Design and Technology	100	96	91	100	99	96	100	98	93
Information and Communication Technology	100	96	92	100	98	96	100	97	94
History	100	95	89	100	98	95	100	96	92
Geography	100	95	89	100	98	95	100	96	92
Art and Design	100	94	90	100	99	97	100	96	94
Music	100	93	91	100	99	96	100	96	93
Physical Education	100	97	92	100	96	94	100	97	93



**Notes:**

1. If there were no pupils eligible for assessment in a subject for a particular year the graph will discontinue and

This report uses data for 2017 for LA and Wales comparative information

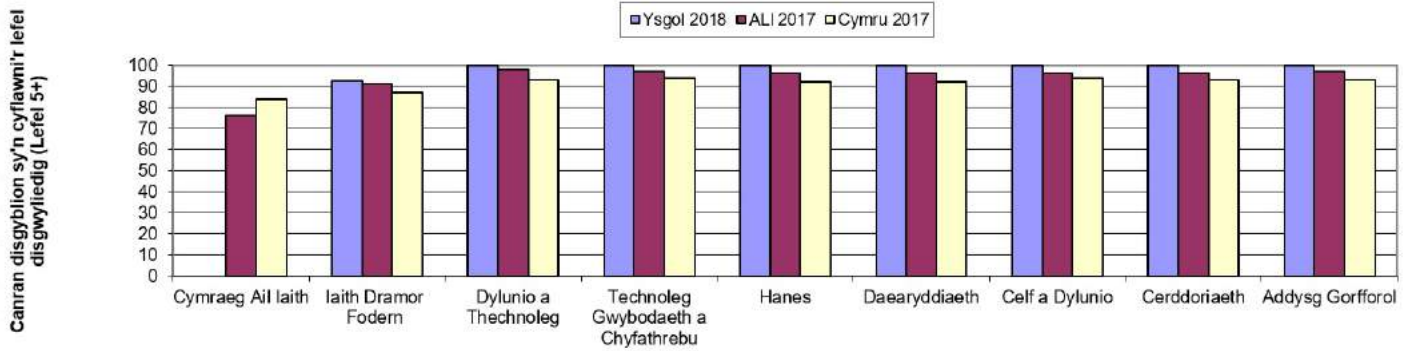
YSGOL GYFUN PENWEDDIG  
Ceredigion

LA/School no: 667/4048

## School comparative information: National Curriculum Assessments 2018 Key Stage 3

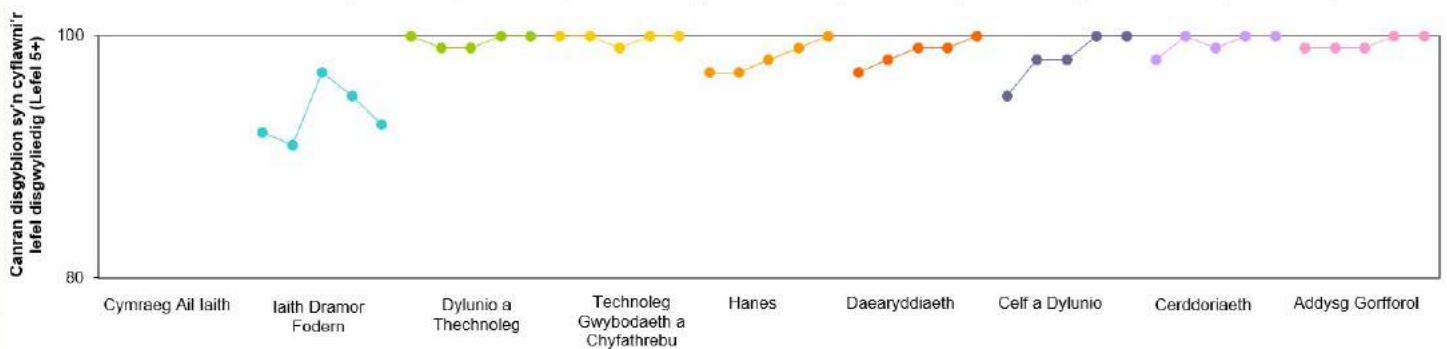
Percentage of pupils achieving the expected level (Level 5+)

	Boys			Girls			Pupils		
	School 2018	LA 2017	Wales 2017	School 2018	LA 2017	Wales 2017	School 2018	LA 2017	Wales 2017
Welsh Second Language	0	70	78	0	87	90	0	76	84
Modern Foreign Language	92	87	82	94	96	92	93	91	87
Design and Technology	100	96	91	100	99	96	100	98	93
Information and Communication Technology	100	96	92	100	98	96	100	97	94
History	100	95	89	100	98	95	100	96	92
Geography	100	95	89	100	98	95	100	96	92
Art and Design	100	94	90	100	99	97	100	96	94
Music	100	93	91	100	99	96	100	96	93
Physical Education	100	97	92	100	96	94	100	97	93



### Disgyblion

### Perfformiad yr ysgol dros amser (2014 - 2018)



### Nodiadau:

1. Os nad oedd unrhyw ddisgyblion yn gymwys i'w hasesu mewn pwnc ar gyfer blwyddyn benodol bydd y graff yn terfynu a dangos bwllch ar gyfer y flwyddyn honno.

### Pupils in Year 11

**Number of pupils in Year 11 who were on roll in January 2018 :** **88**

**Percentage of pupils in Year 11 who:**

	entered at least one qualification	achieved the Level 1 threshold	achieved the Level 2 threshold	achieved the Level 2 threshold including a GCSE pass in English or Welsh first language and mathematics	Achieved 5 or more GCSE grades A*-A or equivalent	Average capped 9 (2) points score per pupil	Average capped 8 (2) wider points score per pupil
School 2017/18	99	99	84	74	36	407	371
LA Area 2017/18	99	95	75	59	22	375	343
Wales 2017/18	99	94	67	55	18	350	320
School 16/17/18	100	99	87	71	34	261	370
School 15/16/17	100	99	89	73	32	134	370

**Number of boys in Year 11 who were on roll in January 2018 :** **43**

**Percentage of boys in Year 11 who:**

	entered at least one qualification	achieved the Level 1 threshold	achieved the Level 2 threshold	achieved the Level 2 threshold including a GCSE pass in English or Welsh first language and mathematics	Achieved 5 or more GCSE grades A*-A or equivalent	Average capped 9 (2) points score per pupil	Average capped 8 (2) wider points score per pupil
School 2017/18	98	98	88	79	30	400	363
LA Area 2017/18	100	94	71	55	20	367	336
Wales 2017/18	99	92	61	50	14	336	307
School 16/17/18	99	99	86	69	26	266	362
School 15/16/17	100	99	84	67	24	142	360

**Number of girls in Year 11 who were on roll in January 2018 :** **45**

**Percentage of girls in Year 11 who:**

	entered at least one qualification	achieved the Level 1 threshold	achieved the Level 2 threshold	achieved the Level 2 threshold including a GCSE pass in English or Welsh first language and mathematics	Achieved 5 or more GCSE grades A*-A or equivalent	Average capped 9 (2) points score per pupil	Average capped 8 (2) wider points score per pupil
School 2017/18	100	100	80	69	42	413	378
LA Area 2017/18	99	96	80	62	25	382	349
Wales 2017/18	99	95	73	61	22	365	334
School 16/17/18	100	99	89	74	44	255	378
School 15/16/17	100	99	93	80	41	124	382

(1) For details on approved qualifications, point scores and contribution to thresholds, please see the Qualifications Wales website (QiW) at <https://www.qiw.wales/>

(2) Average capped 9 / 8 wider point scores are calculated using the best 9 / 8 results but must include certain subjects. See notes for further details.

### Disgyblion yn blwyddyn 11

**Nifer y disgyblion yn blwyddyn 11 a oedd ar y gofrestr yn Ionawr 2018 : 88**

**Canran y disgyblion yn blwyddyn 11 a:**

	gofrestrodd am o leiaf un cymhwyster	enillodd drothwy Lefel 1	enillodd drothwy Lefel 2	enillodd drothwy Lefel 2 gan gynnwys TGAU mewn Saesneg neu Cymraeg iaith gyntaf a mathemateg	enillodd 5 gradd TGAU A*-A neu cyfatebol	Sgôr bwyntiau gyfartalog 9 fesul disgybl wedi'i chapio (2)	Sgôr bwyntiau gyfartalog 8 fesul disgybl wedi'i chapio (2)
Ysgol 2017/18	99	99	84	74	36	407	371
Ardal ALI 2017/18	99	95	75	59	22	375	343
Cymru 2017/18	99	94	67	55	18	350	320
Ysgol 16/17/18	100	99	87	71	34	261	370
Ysgol 15/16/17	100	99	89	73	32	134	370

**Nifer y bechgyn yn blwyddyn 11 a oedd ar y gofrestr yn Ionawr 2018 : 43**

**Canran y bechgyn yn blwyddyn 11 a:**

	gofrestrodd am o leiaf un cymhwyster	enillodd drothwy Lefel 1	enillodd drothwy Lefel 2	enillodd drothwy Lefel 2 gan gynnwys TGAU mewn Saesneg neu Cymraeg iaith gyntaf a mathemateg	enillodd 5 gradd TGAU A*-A neu cyfatebol	Sgôr bwyntiau gyfartalog 9 fesul disgybl wedi'i chapio (2)	Sgôr bwyntiau gyfartalog 8 fesul disgybl wedi'i chapio (2)
Ysgol 2017/18	98	98	88	79	30	400	363
Ardal ALI 2017/18	100	94	71	55	20	367	336
Cymru 2017/18	99	92	61	50	14	336	307
Ysgol 16/17/18	99	99	86	69	26	266	362
Ysgol 15/16/17	100	99	84	67	24	142	360

**Nifer y merched yn blwyddyn 11 a oedd ar y gofrestr yn Ionawr 2018 : 45**

**Canran y merched yn blwyddyn 11 a:**

	gofrestrodd am o leiaf un cymhwyster	enillodd drothwy Lefel 1	enillodd drothwy Lefel 2	enillodd drothwy Lefel 2 gan gynnwys TGAU mewn Saesneg neu Cymraeg iaith gyntaf a mathemateg	enillodd 5 gradd TGAU A*-A neu cyfatebol	Sgôr bwyntiau gyfartalog 9 fesul disgybl wedi'i chapio (2)	Sgôr bwyntiau gyfartalog 8 fesul disgybl wedi'i chapio (2)
Ysgol 2017/18	100	100	80	69	42	413	378
Ardal ALI 2017/18	99	96	80	62	25	382	349
Cymru 2017/18	99	95	73	61	22	365	334
Ysgol 16/17/18	100	99	89	74	44	255	378
Ysgol 15/16/17	100	99	93	80	41	124	382

(1) I gael manylion ar gymhwysterau sydd wedi'u cymeradwyo, sgôr pwyntiau a chyfraniad at y throthwy, gweler gwefan Cymwysterau Cymru (QiW) <http://www.qiw.wales/>

(2) Cyfrifir y sgôr pwyntiau 9 / 8 wedi'i chapio gan ddefnyddio y 9 / 8 canlyniad gorau ond rhaid cynnwys rhai pynciau penodol.

Gweler y nodiadau am rhagor o fanylion.

## Ysgol Gyfun Penweddig

### Summary of School Performance (1)

#### Pupils in Year 11

# Provisional SSSP 2018

LA/School No. 667 / 4048

**Number of pupils in Year 11 who were on roll in January 2018 :** **88**

**Percentage of pupils in Year 11 who:**

achieved an A\*-C Grade in :

	English / Welsh	English	Welsh (2)	Science	Maths	Maths - Numeracy	Best of Maths	Core subject indicator (3)
School 2017/18	88	74	83	86	73	75	77	73
LA Area 2017/18	72	66	77	73	61	65	68	57
Wales 2017/18	65	63	74	63	59	58	64	53
School 15/16/17	86	76	86	85	43	45	47	71
School 14/15/16	86	76	89	84	20	22	23	72

**Number of boys in Year 11 who were on roll in January 2018 :** **43**

**Percentage of boys in Year 11 who:**

achieved an A\*-C Grade in :

	English / Welsh	English	Welsh (2)	Science	Maths	Maths - Numeracy	Best of Maths	Core subject indicator (3)
School 2017/18	91	70	83	86	77	81	84	77
LA Area 2017/18	61	54	69	72	62	67	69	55
Wales 2017/18	56	54	65	60	57	58	62	48
School 15/16/17	80	70	82	81	45	50	50	69
School 14/15/16	78	66	80	78	22	24	24	66

**Number of girls in Year 11 who were on roll in January 2018 :** **45**

**Percentage of girls in Year 11 who:**

achieved an A\*-C Grade in :

	English / Welsh	English	Welsh (2)	Science	Maths	Maths - Numeracy	Best of Maths	Core subject indicator (3)
School 2017/18	84	78	82	87	69	69	71	69
LA Area 2017/18	81	77	83	73	60	62	66	60
Wales 2017/18	74	72	83	66	61	58	65	58
School 15/16/17	92	83	90	89	41	41	43	74
School 14/15/16	96	88	100	90	19	19	20	80

(1) For details on approved qualifications, point scores and contribution to thresholds, please see the Qualifications Wales website

(QIW) at <https://www.qiw.wales/>

(2) Note that the denominator for this indicator is the number pupils in Year 11 who entered Welsh First Language, rather than the total number of pupils in Year 11



### Disgyblion yn blwyddyn 11

**Nifer y disgyblion yn blwyddyn 11 a oedd ar y gofrestr yn Ionawr 2018 : 88**

**Canran y disgyblion yn blwyddyn 11 a:**

ennillodd A \*-C mewn :

	Saesneg/ Cymraeg	Saesneg	Cymraeg (6)	Gwyddoniaeth	Mathemateg	Mathemateg - Rhifedd	Gorau o Fathemateg	Dangosydd Pynciau Craidd (3)
Ysgol 2017/18	88	74	83	86	73	75	77	73
Ardal ALI 2017/18	72	66	77	73	61	65	68	57
Cymru 2017/18	65	63	74	63	59	58	64	53
Ysgol 16/17/18	86	76	86	85	43	45	47	71
Ysgol 15/16/17	86	76	89	84	20	22	23	72

**Nifer y bechgyn yn blwyddyn 11 a oedd ar y gofrestr yn Ionawr 2018 : 43**

**Canran y bechgyn yn blwyddyn 11 a:**

ennillodd A \*-C mewn :

	Saesneg/ Cymraeg	Saesneg	Cymraeg (6)	Gwyddoniaeth	Mathemateg	Mathemateg - Rhifedd	Gorau o Fathemateg	Dangosydd Pynciau Craidd (3)
Ysgol 2017/18	91	70	83	86	77	81	84	77
Ardal ALI 2017/18	61	54	69	72	62	67	69	55
Cymru 2017/18	56	54	65	60	57	58	62	48
Ysgol 16/17/18	80	70	82	81	45	50	50	69
Ysgol 15/16/17	78	66	80	78	22	24	24	66

**Nifer y merched yn blwyddyn 11 a oedd ar y gofrestr yn Ionawr 2018 : 45**

**Canran y merched yn blwyddyn 11 a:**

ennillodd A \*-C mewn :

	Saesneg/ Cymraeg	Saesneg	Cymraeg (6)	Gwyddoniaeth	Mathemateg	Mathemateg - Rhifedd	Gorau o Fathemateg	Dangosydd Pynciau Craidd (3)
Ysgol 2017/18	84	78	82	87	69	69	71	69
Ardal ALI 2017/18	81	77	83	73	60	62	66	60
Cymru 2017/18	74	72	83	66	61	58	65	58
Ysgol 16/17/18	92	83	90	89	41	41	43	74
Ysgol 15/16/17	96	88	100	90	19	19	20	80

(1) I gael manylion ar gymhwysterau sydd wedi'u cymeradwyo, sgôr pwyntiau a chyfraniad at y throthwy, gweler y Gronfa Ddata Cymwysterau

Cymeradwy Cymru (DAQW) yn <http://www.daqw.org.uk/>

(2) Mae manylion ynglŷn â pha feysydd llafur sydd ym mhob pwnc ar gael yn y nodiadau cyfarwyddyd.

(3) Cyfrifir y sgôr pwyntiau cyfartalog eang wedi'i gapio gan ddefnyddio'r 8 calnlyniad gorau.

(4) Cymhwyster Lefel Mynediad.

(5) Defnyddir ar gyfer holl dablau meincodi prydau am ddim. Dangosir y dangosydd yma dim ond am ysgollion uwchradd prif ffrwd.

(6) Nodwch mai enwadur y dangosydd yma yw'r disgyblion yn blwyddyn 11 a geisiodd arholiad Cymraeg Iaith Gyntaf, yn hytrach na chyfanswm yr holl ddisgyblion yn blwyddyn 11.

.. Data ddim ar gael.

### Achievement of the Skills Challenge Certificate by pupils in Year 11

	Percentage of pupils in Year 11 who:		Percentage of boys in Year 11 who:		Percentage of girls in Year 11 who:	
	Achieved the Foundation or National Skills Challenge Certificate at KS4	Achieved the National Skills Challenge Certificate at KS4	Achieved the Foundation or National Skills Challenge Certificate at KS4	Achieved the National Skills Challenge Certificate at KS4	Achieved the Foundation or National Skills Challenge Certificate at KS4	Achieved the National Skills Challenge Certificate at KS4
School 2017/18	95	84	98	84	93	84
LA Area 2017/18	85	73	82	64	88	82
Wales 2017/18	87	73	84	66	90	81
School 16/17/18	..	..	..	..	..	..
School 15/16/17	..	..	..	..	..	..

### Achievement of the Welsh Bacallaureate By Pupils in Year 11

	Percentage of pupils in Year 11 who:		Percentage of boys in Year 11 who:		Percentage of girls in Year 11 who:	
	Achieved the Foundation or National Welsh Bacallaureate at KS4	Achieved the National Welsh Bacallaureate at KS4	Achieved the Foundation or National Welsh Bacallaureate at KS4	Achieved the National Welsh Bacallaureate at KS4	Achieved the Foundation or National Welsh Bacallaureate at KS4	Achieved the National Welsh Bacallaureate at KS4
School 2017/18	95	70	98	72	93	69
LA Area 2017/18	85	53	82	46	88	60
Wales 2017/18	85	51	82	45	89	58
School 16/17/18	..	..	..	..	..	..
School 15/16/17	..	..	..	..	..	..

(1) For details on approved qualifications, point scores and contribution to thresholds, please see Qualifications Wales (QiW) at <https://www.qiw.wales/>

.. Data not available

### Cyflawniad y Tystysgrif Sgiliau Uwch gan ddisgyblion ym mlwyddyn 11

	Canran y disgyblion ym mlwyddyn 11 a:		Canran y bechgyn ym mlwyddyn 11 a:		Canran y merched ym mlwyddyn 11 a:	
	gyflawnodd y Tystysgrif Her Sgiliau Cenedlaethol neu Sylfaenol	gyflawnodd y Tystysgrif Her Sgiliau Cenedlaethol	gyflawnodd y Tystysgrif Her Sgiliau Cenedlaethol neu Sylfaenol	gyflawnodd y Tystysgrif Her Sgiliau Cenedlaethol	gyflawnodd y Tystysgrif Her Sgiliau Cenedlaethol neu Sylfaenol	gyflawnodd y Tystysgrif Her Sgiliau Cenedlaethol
Ysgol 2017/18	95	84	98	84	93	84
Ardal ALI 2017/18	85	73	82	64	88	82
Cymru 2017/18	87	73	84	66	90	81
Ysgol 16/17/18	..	..	..	..	..	..
Ysgol 15/16/17	..	..	..	..	..	..

### Cyflawniad y Bagloriaeth Cymru gan ddisgyblion ym mlwyddyn 11

	Canran y disgyblion ym mlwyddyn 11 a:		Canran y bechgyn ym mlwyddyn 11 a:		Canran y merched ym mlwyddyn 11 a:	
	gyflawnodd y Bagloriaeth Cenedlaethol neu Sylfaenol Cymru	gyflawnodd y Bagloriaeth Cenedlaethol Cymru	gyflawnodd y Bagloriaeth Cenedlaethol neu Sylfaenol Cymru	gyflawnodd y Bagloriaeth Cenedlaethol Cymru	gyflawnodd y Bagloriaeth Cenedlaethol neu Sylfaenol Cymru	gyflawnodd y Bagloriaeth Cenedlaethol Cymru
Ysgol 2017/18	95	70	98	72	93	69
Ardal ALI 2017/18	85	53	82	46	88	60
Cymru 2017/18	85	51	82	45	89	58
Ysgol 16/17/18	..	..	..	..	..	..
Ysgol 15/16/17	..	..	..	..	..	..

(1) For details on approved qualifications, point scores and contribution to thresholds, please see Qualifications Wales website

(QiW) at <https://www.qiw.wales/>  
Data not available

..

### Pupils aged 17

	Number of pupils aged 17 who were on roll in		Number of boys aged 17 who were on roll in		Number of girls aged 17 who were on roll in	
	January 2018: 61		January 2018: 27		January 2018: 34	
	Achieved the Level 3 threshold	Average wider points score	Achieved the Level 3 threshold	Average wider points score	Achieved the Level 3 threshold	Average wider points score
School 2017/18	100	823	100	732	100	896
LA Area 2017/18	99	795	98	715	99	860
Wales 2017/18	98	739	97	690	98	780
School 16/17/18	99	854	99	807	99	896
School 15/16/17	98	875	98	842	99	908
	Achieved 3 or more A level Grades A*-A or equivalent	Achieved 3 or more A level Grades A*-C or equivalent	Achieved 3 or more A level Grades A*-A or equivalent	Achieved 3 or more A level Grades A*-C or equivalent	Achieved 3 or more A level Grades A*-A or equivalent	Achieved 3 or more A level Grades A*-C or equivalent
School 2017/18	21	70	17	65	24	73
LA Area 2017/18	18	67	20	55	16	76
Wales 2017/18	13	58	13	50	14	64
School 16/17/18	13	66	13	55	13	75
School 15/16/17	7	66	8	57	6	76

### Achievement of the Advanced Skills Challenge Certificate and Welsh Baccalaureate by pupils aged 17:

	Percentage of pupils aged 17 Who :		Percentage of boys aged 17 Who :		Percentage of girls aged 17 Who :	
	Achieved the Advanced Skills Challenge Certificate	Achieved the Advanced Welsh Baccalaureate	Achieved the Advanced Skills Challenge Certificate	Achieved the Advanced Welsh Baccalaureate	Achieved the Advanced Skills Challenge Certificate	Achieved the Advanced Welsh Baccalaureate
	School 2017/18	92	84	85	74	97
LA Area 2017/18	87	77	81	66	92	85
Wales 2017/18	69	60	65	55	72	64
School 16/17/18	..	..	..	..	..	..
School 15/16/17	..	..	..	..	..	..

(1) For details on approved qualifications, point scores and contribution to thresholds, please see Qualifications Wales website (QiW) at <https://www.qiw.wales/>

### Disgyblion 17 oed

	Number of pupils aged 17 who were on roll in		Number of boys aged 17 who were on roll in		Number of girls aged 17 who were on roll in	
	January 2018: 61		January 2018: 27		January 2018: 34	
	Canran y disgyblion 17 oed a gofrestrodd am gyfaint o ddysgu yn gyfartal i 2 lefel A ac yn ennill y trothwy Lefel 3	Sgôr bwyntiau gyfartalog eang am bob disgybl 17 oed	Canran y disgyblion 17 oed a gofrestrodd am gyfaint o ddysgu yn gyfartal i 2 lefel A ac yn ennill y trothwy Lefel 3	Sgôr bwyntiau gyfartalog eang am bob disgybl 17 oed	Canran y disgyblion 17 oed a gofrestrodd am gyfaint o ddysgu yn gyfartal i 2 lefel A ac yn ennill y trothwy Lefel 3	Sgôr bwyntiau gyfartalog eang am bob disgybl 17 oed
Ysgol 2017/18	100	823	100	732	100	896
Ardal ALI 2017/18	99	795	98	715	99	860
Cymru 2017/18	98	739	97	690	98	780
Ysgol 16/17/18	99	854	99	807	99	896
Ysgol 15/16/17	98	875	98	842	99	908
	Cyflawni 3 neu fwy lefel A gradd A*-A neu cyfatebol	Cyflawni 3 neu fwy lefel A gradd A*-C neu cyfatebol	Cyflawni 3 neu fwy lefel A gradd A*-A neu cyfatebol	Cyflawni 3 neu fwy lefel A gradd A*-C neu cyfatebol	Cyflawni 3 neu fwy lefel A gradd A*-A neu cyfatebol	Cyflawni 3 neu fwy lefel A gradd A*-C neu cyfatebol
Ysgol 2017/18	21	70	17	65	24	73
Ardal ALI 2017/18	18	67	20	55	16	76
Cymru 2017/18	13	58	13	50	14	64
Ysgol 16/17/18	13	66	13	55	13	75
Ysgol 15/16/17	7	66	8	57	6	76

### Cyflawniad y Tystysgrif Her Sgiliau Uwch a'r Bagloriaeth Uwch Cymru gan ddisgyblion 17 oed

	Canran y disgyblion 17 oed a:		Canran y bechgyn 17 oed a:		Canran y merched 17 oed a:	
	gyflawnodd y Tystysgrif Her Sgiliau Uwch	gyflawnodd y Bagloriaeth Uwch Cymru	gyflawnodd y Tystysgrif Her Sgiliau Uwch	gyflawnodd y Bagloriaeth Uwch Cymru	gyflawnodd y Tystysgrif Her Sgiliau Uwch	gyflawnodd y Bagloriaeth Uwch Cymru
Ysgol 2017/18	92	84	85	74	97	91
Ardal ALI 2017/18	87	77	81	66	92	85
Cymru 2017/18	69	60	65	55	72	64
Ysgol 16/17/18	..	..	..	..	..	..
Ysgol 15/16/17	..	..	..	..	..	..

(1) I gael manylion ar gymhwysterau sydd wedi'u cymeradwyo, sgôr pwyntiau a chyfraniad at y throthwy, gweler gwefan Cymwysterau Cymru

(QiW) <http://www.qiw.wales/>

.. Data ddim ar gael.

Ysgol Gyfun Penweddig

School Type: Comprehensive 11-18

LA/School No. 667 / 4048

Linguistic Delivery: Bilingual

Number of SEN Unit/Special Classes 2018: 0

Number of Pupils on Roll in NCY 11 2018: 88

Percentage of compulsory school age pupils eligible for FSM 16/17/18 <sup>(1)</sup>: 5.1

Percentage of pupils in year 11 on SEN register 2018: 21.0

(1) Used for all Free School Meal benchmarking tables. This indicator is only shown for mainstream secondary schools.

.. Data not available.

### Attendance Summary Report



Ceredigion

YSGOL GYFUN PENWEDDIG

Attendance percentage of possible sessions for pupils on roll and leavers of compulsory school age only

Age	DOB	Attended (%)			Authorised absences (%)			Unauthorised absences (%)			Not required to attend (%)		
		B	G	Total	B	G	Total	B	G	Total	B	G	Total
15	01/09/2001 - 31/08/2002	94.5	92.0	93.2	3.6	4.6	4.1	1.9	3.4	2.7	2.1	2.2	2.2
14	01/09/2002 - 31/08/2003	94.3	95.4	94.8	4.5	3.8	4.1	1.2	0.8	1.0	2.2	2.1	2.1
13	01/09/2003 - 31/08/2004	95.4	94.0	94.7	3.9	4.6	4.2	0.7	1.5	1.1	2.0	2.0	2.0
12	01/09/2004 - 31/08/2005	94.9	95.4	95.2	4.2	3.8	4.0	0.9	0.7	0.8	2.1	2.1	2.1
11	01/09/2005 - 31/08/2006	94.8	96.5	95.7	4.7	3.0	3.8	0.6	0.5	0.6	2.1	2.0	2.0
10	01/09/2006 - 31/08/2007	0.0	0.0	0.0	0.0	0.0	0.0	0.0	0.0	0.0	0.0	0.0	0.0
Less than 10	01/09/2007 - 31/08/3001	0.0	0.0	0.0	0.0	0.0	0.0	0.0	0.0	0.0	0.0	0.0	0.0
<b>All ages</b>		<b>94.8</b>	<b>94.7</b>	<b>94.7</b>	<b>4.2</b>	<b>3.9</b>	<b>4.1</b>	<b>1.0</b>	<b>1.4</b>	<b>1.2</b>	<b>2.1</b>	<b>2.1</b>	<b>2.1</b>

Ysgol Gyfun Penweddig

Math o Ysgol: Comprehensive 11-18

Iaith yr Ysgol: Bilingual

Rhif ALI/Ysgol

667 / 4048

Nifer o Unedau AAA/Dosbarthiadau Arbennig 2018: 0

Nifer y disgyblion ar y gofrestr ym mlwyddyn 11 2018: 88

Canran y disgyblion o oedran ysgol gorfodol a hawl i gael prydau am ddim yn 16/17/18 (1) : 5.1

Canran y disgyblion yn blwyddyn 11 ar y gorestr AAA 2018: 21.0

(1) Yn cael ei ddefnyddio yn y tablau meincodi prydau am ddim. Dangosir hwn ar gyfer ysgolion uwchradd prif ffrwd yn unig.

### Adroddiad Cryno Presenoldeb



#### Ceredigion

YSGOL GYFUN PENWEDDIG

Canran presenoldeb disgyblion sydd ar y gofrestr a disgyblion sy'n gadael o oed ysgol orfodol yn unig ym mhob sesiwn bosibl

Oed	Dyddiad Geni	Yn bresennol (%)			Absenoldebau â chaniatâd (%)			Absenoldebau heb ganiatâd (%)			Heb fod eisiau Mynychu (%)		
		B	M	Cyfan.	B	M	Cyfan.	B	M	Cyfan.	B	M	Cyfan.
15	01/09/2001 - 31/08/2002	94.5	92.0	93.2	3.6	4.6	4.1	1.9	3.4	2.7	2.1	2.2	2.2
14	01/09/2002 - 31/08/2003	94.3	95.4	94.8	4.5	3.8	4.1	1.2	0.8	1.0	2.2	2.1	2.1
13	01/09/2003 - 31/08/2004	95.4	94.0	94.7	3.9	4.6	4.2	0.7	1.5	1.1	2.0	2.0	2.0
12	01/09/2004 - 31/08/2005	94.9	95.4	95.2	4.2	3.8	4.0	0.9	0.7	0.8	2.1	2.1	2.1
11	01/09/2005 - 31/08/2006	94.8	96.5	95.7	4.7	3.0	3.8	0.6	0.5	0.6	2.1	2.0	2.0
10	01/09/2006 - 31/08/2007	0.0	0.0	0.0	0.0	0.0	0.0	0.0	0.0	0.0	0.0	0.0	0.0
Llai na 10	01/09/2007 - 31/08/3001	0.0	0.0	0.0	0.0	0.0	0.0	0.0	0.0	0.0	0.0	0.0	0.0
<b>Pob oedran</b>		<b>94.8</b>	<b>94.7</b>	<b>94.7</b>	<b>4.2</b>	<b>3.9</b>	<b>4.1</b>	<b>1.0</b>	<b>1.4</b>	<b>1.2</b>	<b>2.1</b>	<b>2.1</b>	<b>2.1</b>